

# ACS-USA Instruction

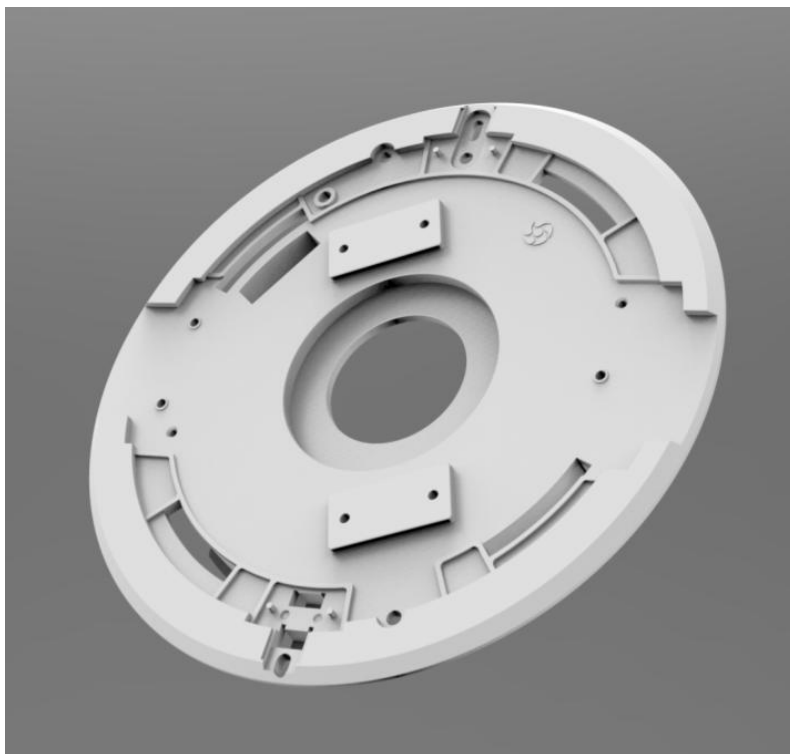
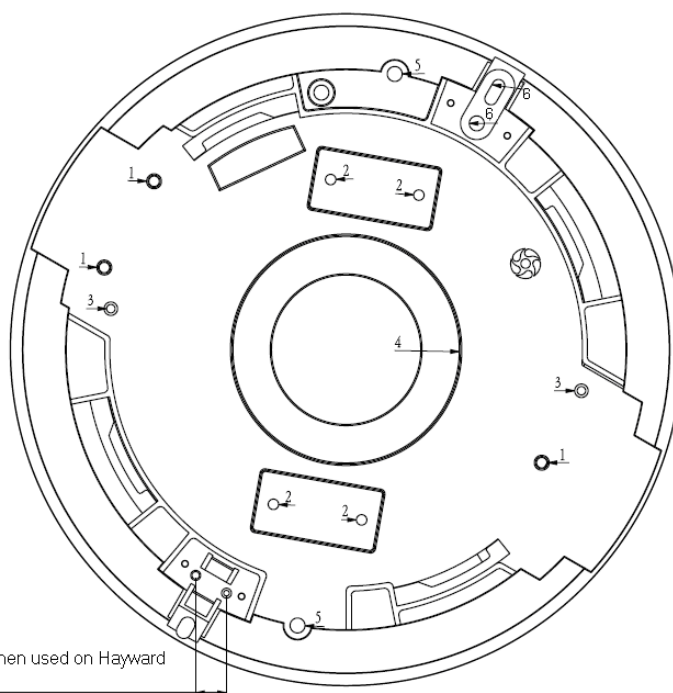


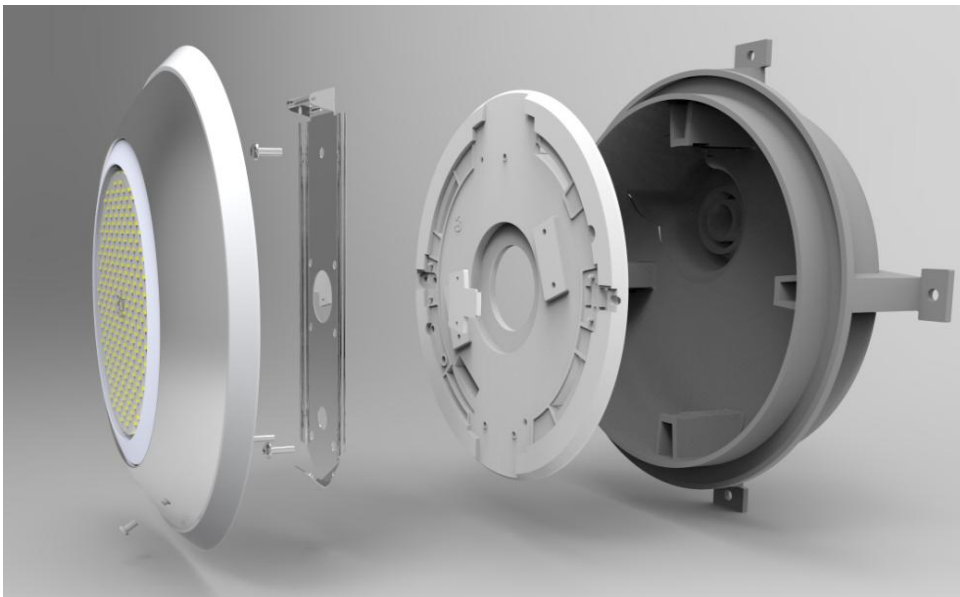
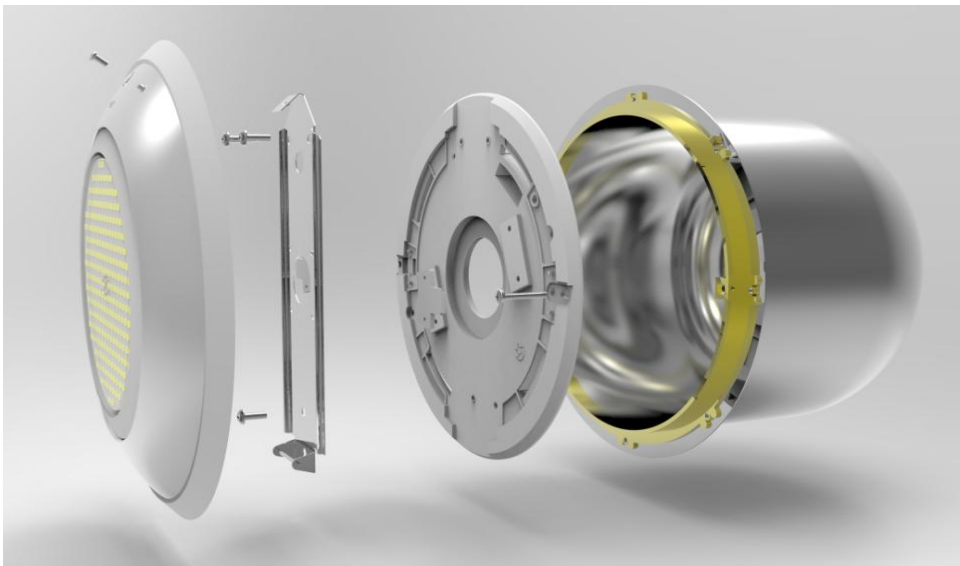
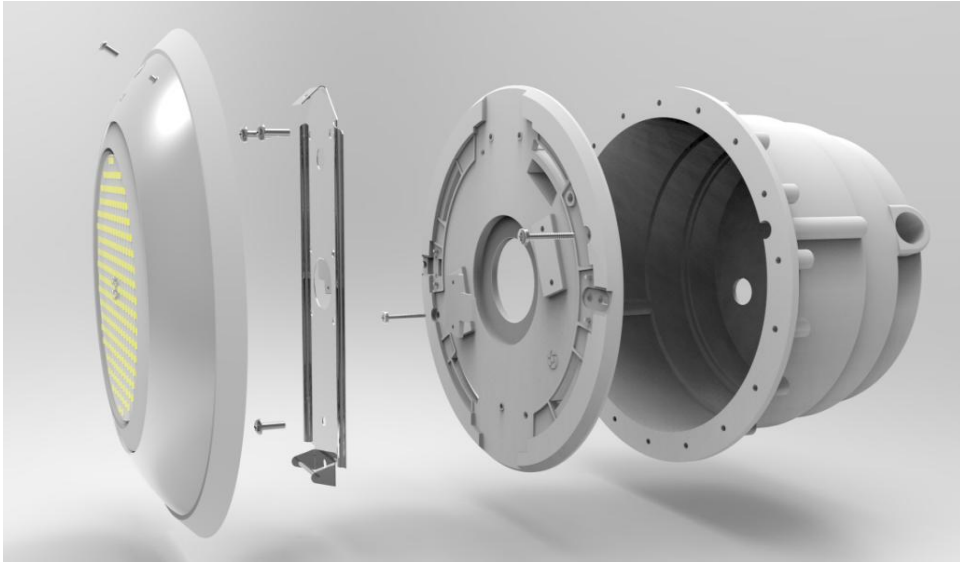
Image of adapter ACS-USA



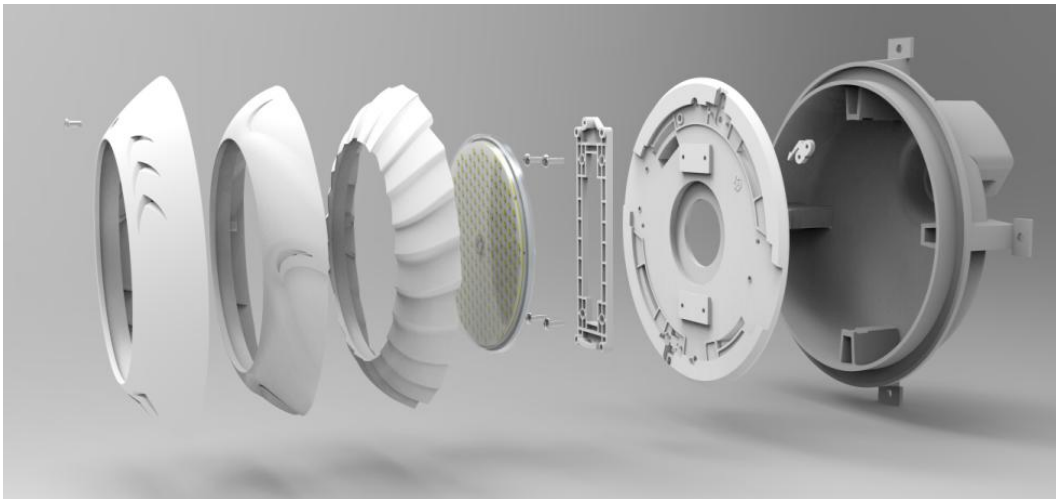
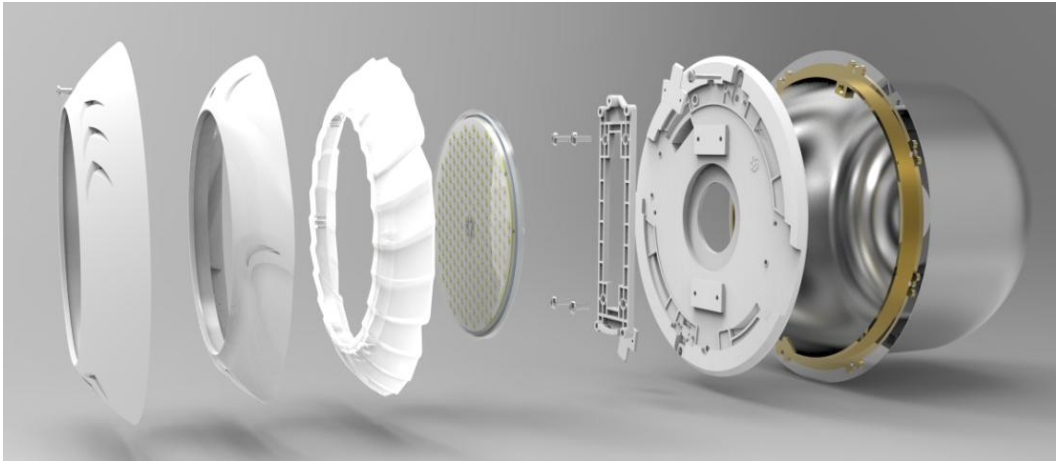
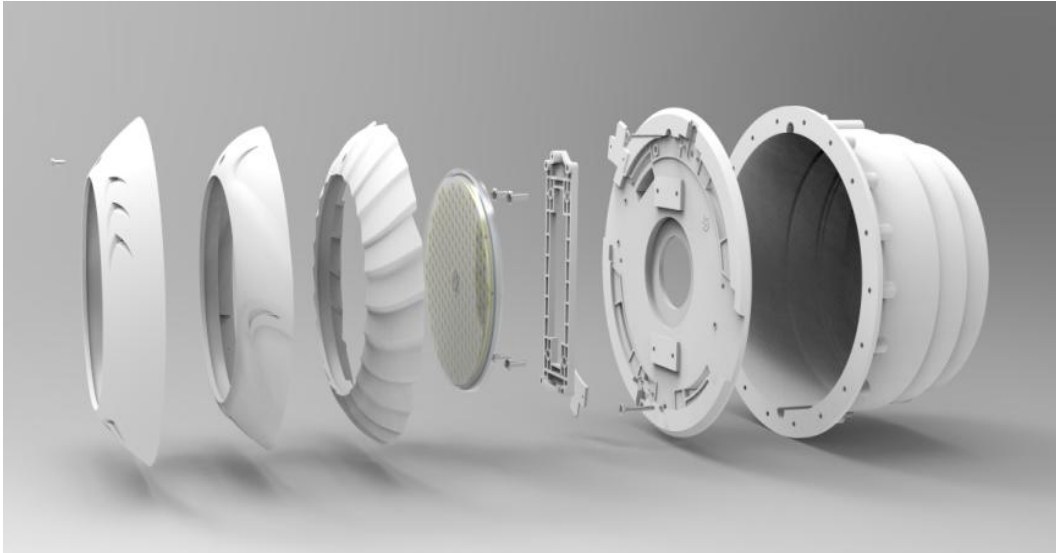
Cut the hook with a M6 drill when used on Hayward niches.

- Holes 1 are used for mounting the bracket of HT001C.
- Holes 2 are used for mounting the bracket of HT003C/HT005C/HT006C.
- Holes 3 are used for mounting the bracket of HT008C.
- Hole 4 is used for mounting HT029C.
- Holes 5 are used for mounting on a thin niche.
- Holes 7 are used for mounting on a deep niche.

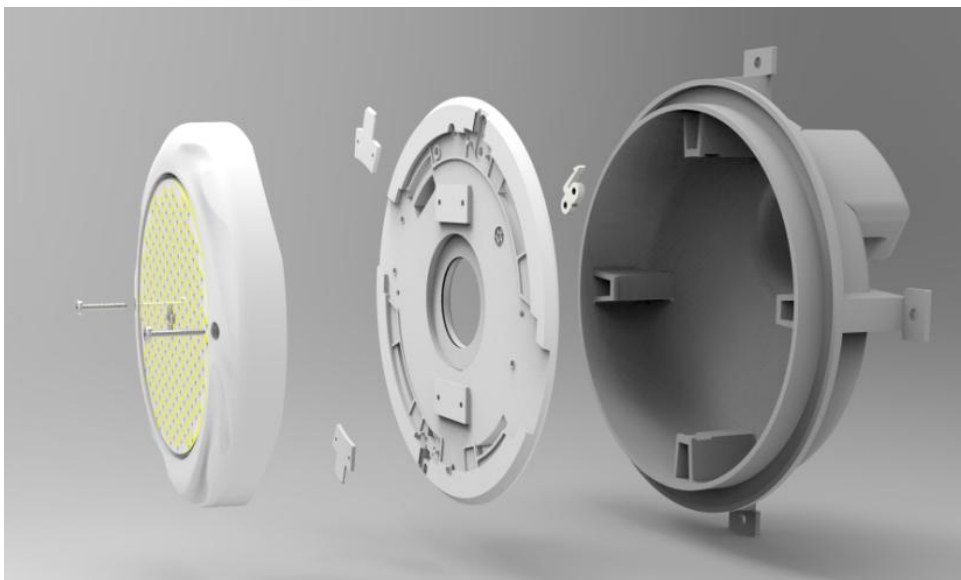
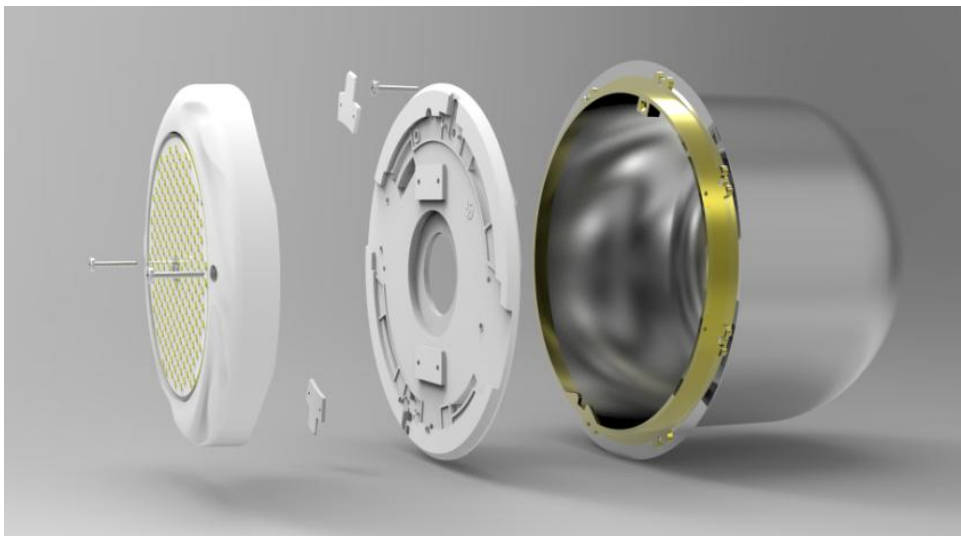
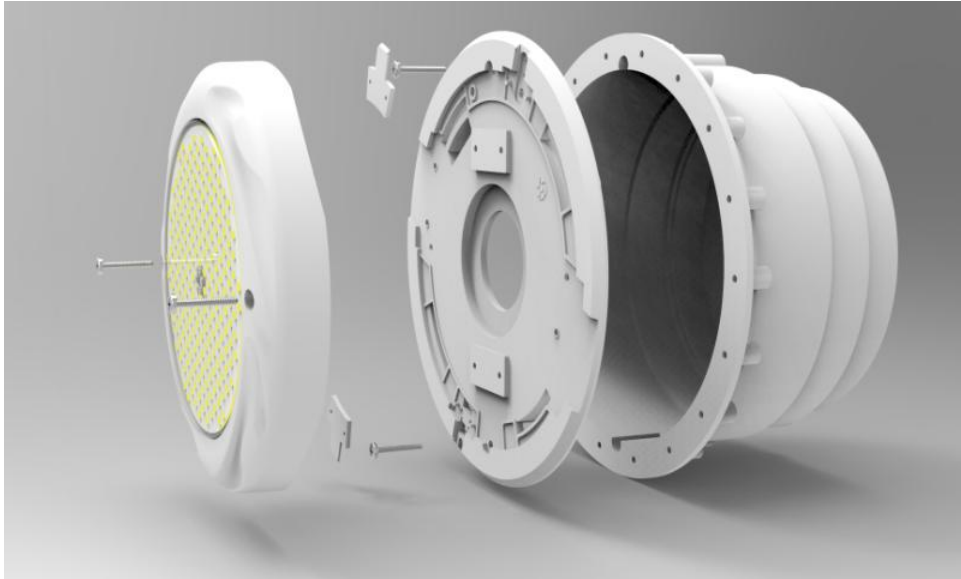
## I. Mounting with HT001C lights



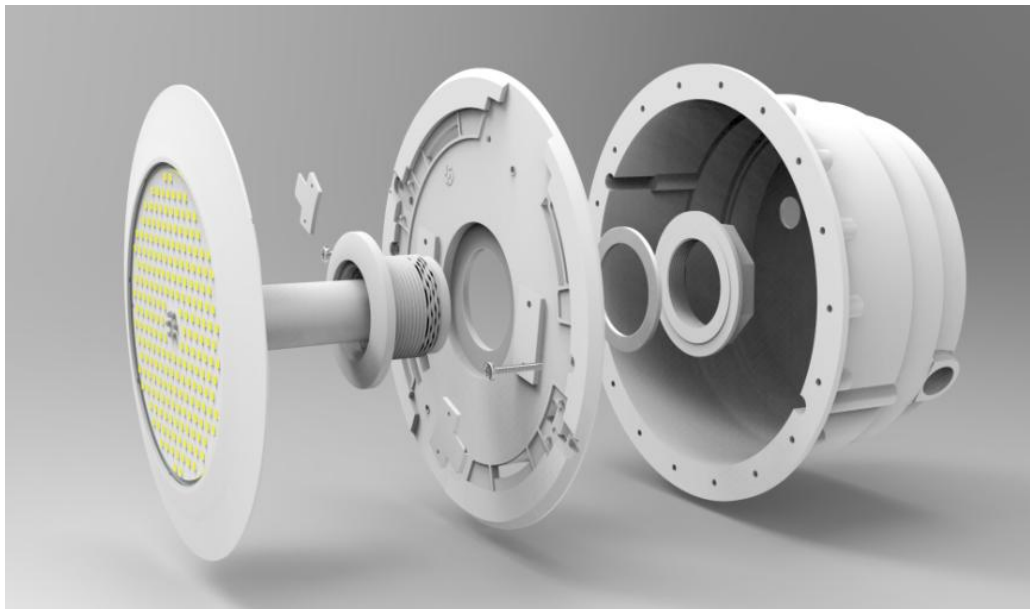
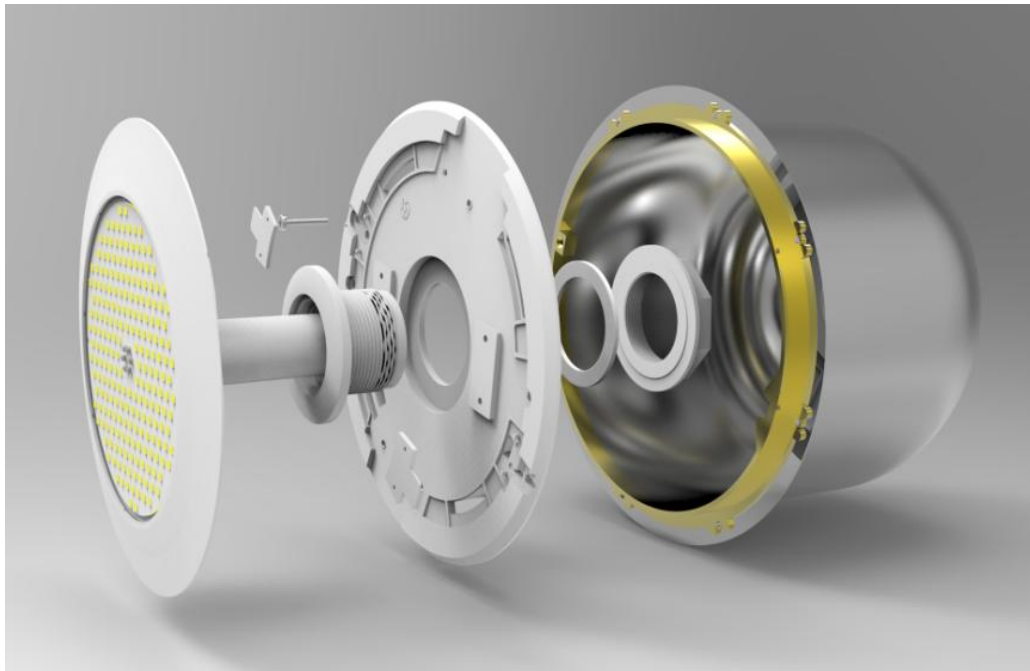
## II. Mounting with HT003C/HT005C/HT006C lights



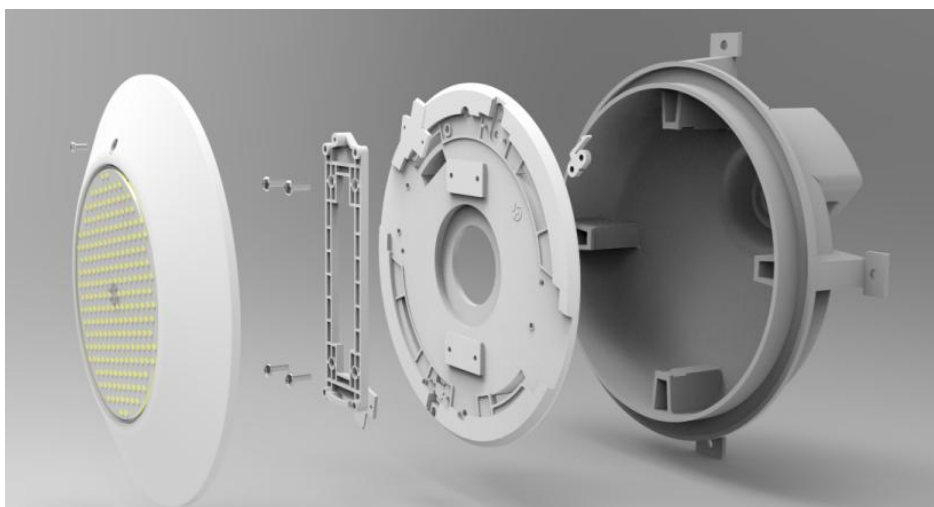
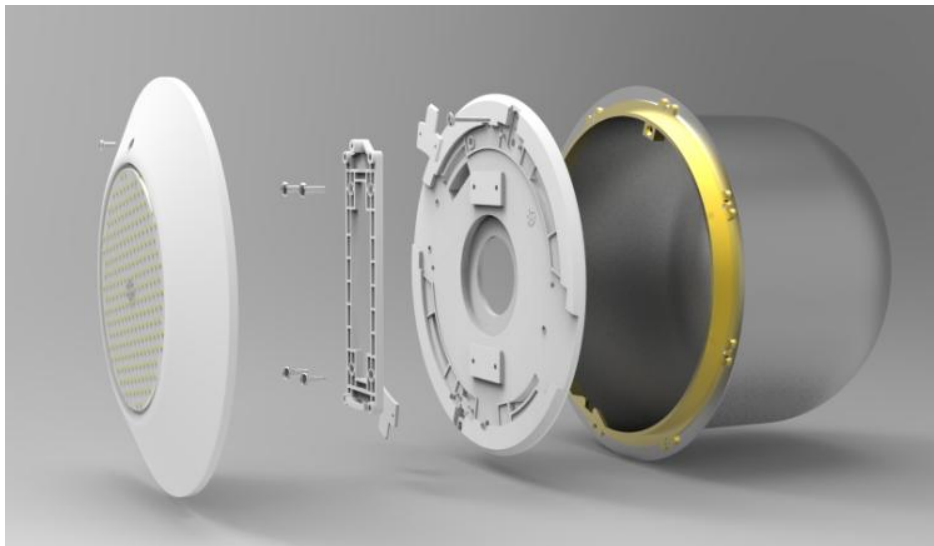
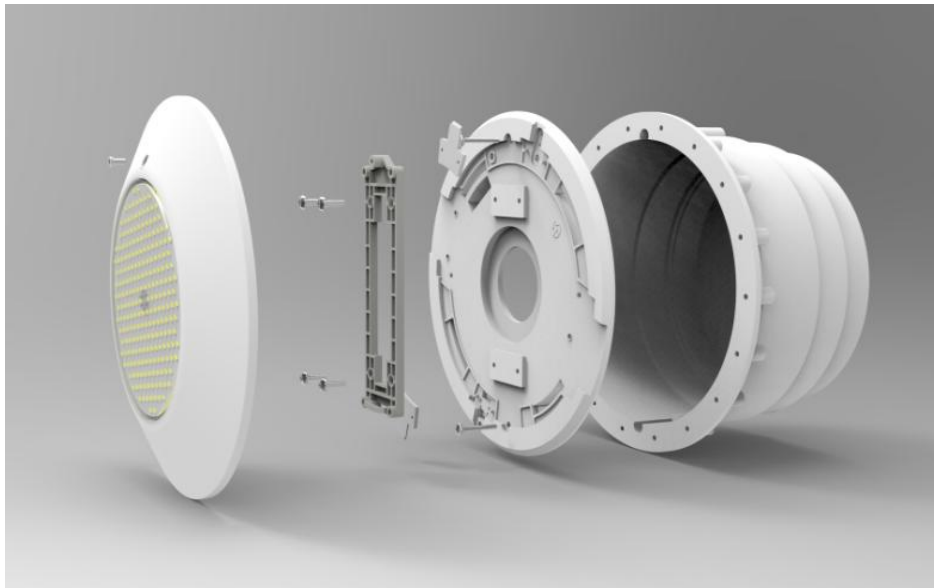
### III. Mounting with HT008C lights



#### IV. Mounting with HT029C lights



## V. Mounting with HT009C lights



# Dimensions

